

**LOCK-TEC PEDESTRIAN GATE CLOSER – 400N**

- **Pedestrian Gate Closer**
- **Easy to fit on timber and steel gates**
- **Pre set controlled closing speed**
  - **Quiet operation**
- **Low opening hand forces**

## Lock-tec Pedestrian Gate Closer

Suitable for gates up to 1.2 m wide and 80 kg weight

Lock-tec Pedestrian Gate Closers are an economic solution for automatically closing pedestrian gates used in commercial situations.

Unlike normal closing springs, Pedestrian Gate Closers do not slam gates shut. They firmly and quietly push the gates closed.

The closing speed is pre-set to provide a controlled close between 5 and 15 seconds\*, depending upon the weight of gate and quality of hinges.

They are extremely simple to install and only require periodic inspection.

Each kit includes fixing brackets, fitting bar and instructions.

As with most gate closers, it is advisable to fit a mechanical stop\*\* restricting the gate opening angle to avoid damage to the closer.

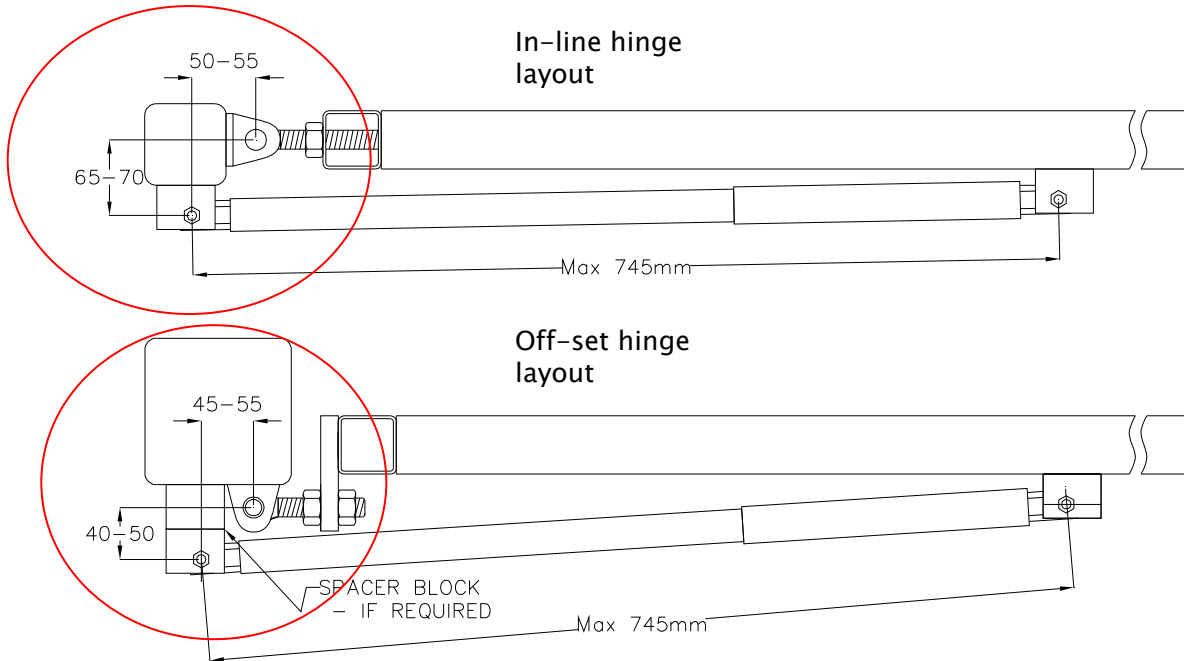
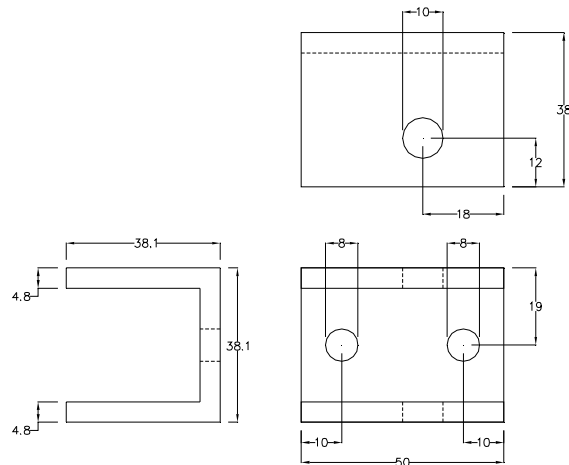
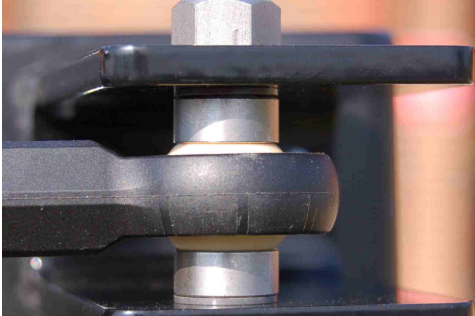


### Technical Data:

Material	Steel
Finish	Black painted
Hinge Arrangements	In-line and offset
Opening Angle**	90 to 110 Deg
Max Gate Weight	80 kg
Max Gate Width	1200 mm
Types of Gate Materials	Timber or steel
Gate Closing Speed*	Hydraulically controlled
Opening Hand Forces	25 to 50N

**Installation Drawings**

Installing the pedestrian gate closer outside of these dimensions will affect its performance and life cycle.

**Mounting Bracket Dimensions****Table of Components in Kit**

Qty	Description
1	Gate closer cylinder assembled with retaining bar
2	Aluminium mounting brackets with plastic inserts
2	Hexagon head stainless steel securing pins
1	Aluminium post bracket spacer
2	Post bracket spacer end plugs
2	M6 stainless steel socket head screws
1	Steel fitting bar
2	Steel fitting bar locating pins
4	Stainless steel spacers for fitting gate closer cylinder to aluminium mounting brackets

**Step 1 – Fixing an Aluminium Mounting Bracket to the Gatepost**

Fix one of the aluminium mounting brackets to the gatepost following one of the layouts from the previous page. If required, use the aluminium post bracket spacer to bring the aluminium mounting bracket to the correct position. When fixing the aluminium mounting brackets, it is important to ensure they are fitted horizontally by using a spirit level. Please note fixings are not included in the kit.

**Step 2 – Fixing the Second Aluminium Mounting Bracket to the Gate**

Using one of the steel fitting bar locating pins, fix one end of the steel fitting bar to the aluminium mounting bracket attached to the gate post. Fix the other aluminium mounting bracket to the steel fitting bar using the other locating pin, and then swing the bar and the bracket around to the gate, check the brackets are horizontally in-line with each other and then mark the fixing holes for the second aluminium mounting bracket to be fixed to the gate. Remove the steel fitting bar and locating pins.

Drill the fixing holes in the gate. Fix the second aluminium mounting bracket to the gate. Check that the distance between the hole centres of both brackets is 745 mm, or less.

**Step 3 – Fitting the Gate Closer to the Aluminium Mounting Brackets**

Fit the stainless steel spacers to the gate closer cylinder. Open the gate until the holes on the aluminium mounting brackets align with the holes in the stainless steel spacers fitted to the gate closer cylinder. Then fit the gate closer cylinder complete with its retaining bar and spacers to the aluminium mounting brackets on the gatepost and gate using the hexagon headed stainless steel securing pins.

Open the gate further and then remove the steel retaining bar from the gate closer cylinder. Release the gate and it will close automatically.

**Step 4 – Final Set-up and Testing Function**

Set the gate's mechanical stop to the correct position. To do this open the gate to a position where the distance between the centres of the hexagon headed fixing pins are 555 mm, or more. Set the gate's mechanical stop to restrict the opening at this point. Open the gate and allow the closer to close the gate a few times to check the function.

**Step 5 – Check Fixings**

Check all fixings are secure. Fit M6 socket head screws into the underside of the hexagon headed stainless steel securing pins using a thread locking liquid. Finally, remove plastic cover from the gate closer cylinder. The gate closer is now ready for use.

**Maintenance Instructions**

Regular maintenance is required to reduce the risk of premature failure of the gate closer. The regularity of the maintenance is a variable according to the extremities of the application environment. Typically maintenance intervals would be quarterly depending upon the environment and frequency of use.

**Maintenance checks**

- 1) Maintain lubrication of end fixings & joints to both the gatepost & gate surface using lithium grease.
- 2) Ensure the closer remains in a horizontal position at all times.
- 3) Check to ensure all bracket fixings are secure.
- 4) Check that gate is moving in a consistent horizontal motion.
- 5) Check for damage to the closer or gate.
- 6) Lubricate the hinges of the gate

**General Comments & Disclaimer**

LOCK-TEC will accept no liability for any damage to the products whatsoever caused by incorrect fitting, vandalism, misuse or any incorrect assessment of the application.

Thorough assessment of each gate application is essential. Failure to foresee the possible opportunities for vandalism, misuse and environmental attack are likely to cause premature failure.

LOCK-TEC will accept no liability for any personal injury or damage to the closer occurring during the installation or use of this product. In purchasing this product, the purchaser accepts all responsibility for the installation, operation and maintenance of the product throughout its life cycle.