

Fitting Instructions Lock-tec 200/400/600 Pedestrian Gate Closer

Lock-tec Pedestrian Gate Closers are an economic and reliable automatic gate closer for use with commercial gates.

Unlike normal closing springs, Lock-tec Pedestrian Gate Closers do not slam gates shut. They firmly and quietly push gates closed, making them ideal for use with electric / magnetic locks and other latching devices.

The closing speed is pre-set to give a controlled closing time of approximately 6 seconds*, depending upon the weight of gate and condition of the hinges. With this closer there is no risk of malicious adjustment or tampering with the speed adjustment after the closer is fitted.

Lock-tec Pedestrian Gate Closers are extremely simple to install and only require periodic inspection. There are three models available, a 200, 400 and a 600. And each model is available in black painted finish or stainless steel.

Each gate closer kit includes fixing brackets, fitting bar and instructions. Fixings are not included. Button socket head screws are suitable for metal fixing and a similar low profile is suitable for timber fixing.

As with most gate closers, it is advisable to fit a mechanical stop restricting the gate opening angle to avoid damage to the closer.**

Please contact us for advice regarding suitability.



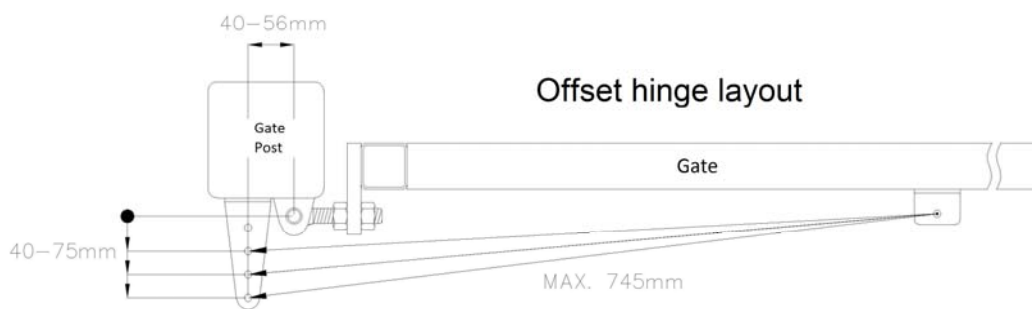
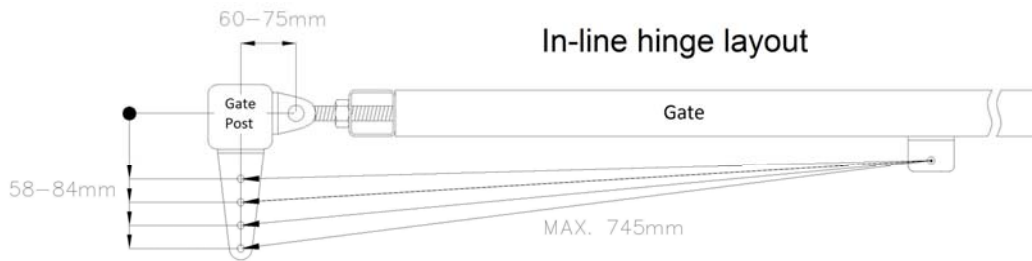
Technical overview:

Material	Steel / stainless steel
Finish	Black paint / stainless steel
Hinge arrangements	In-line and offset
Opening angle**	90 deg. plus
Gate weight (200 model)	Up to 50kg
Gate weight (400 model)	Up to 80kg
Gate weight (600 model)	Up to 100kg
Gate width (200 model)	Up to 1m
Gate width (400 model)	1m to 1.5m
Gate width (600 model)	Up to 3m
Types of gate materials	Timber or metal
Gate closing speed*	Hydraulically controlled

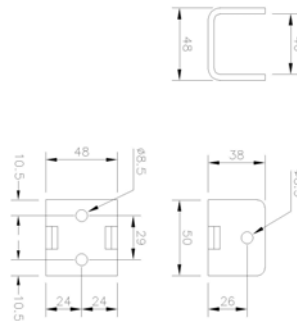
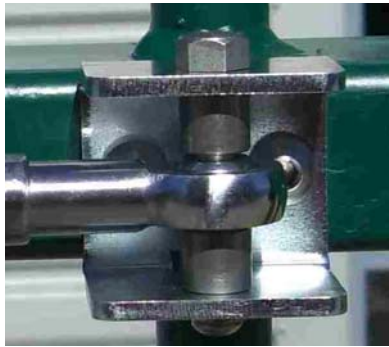
Ordering overview:

Model	Part Reference
200 Screw/weld fix black	GATECLOSER055
400 Screw/weld fix black	GATECLOSER056
600 Screw/weld fix black	GATECLOSER057
200 Screw/weld fix stainless	GATECLOSER058
400 Screw/weld fix stainless	GATECLOSER059
600 Screw/weld fix stainless	GATECLOSER060

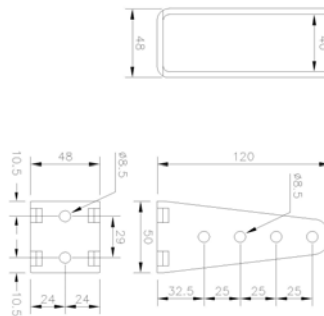
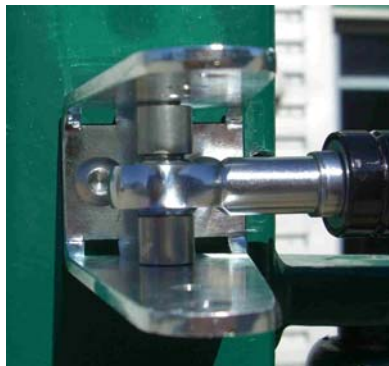
Installation Drawings



Gate Bracket



Post Bracket



DO NOT REMOVE CLAMP OR ZIP TIES FROM GATE CLOSER CYLINDER



Fig. 1 Gate Closer Cylinder assembled with retaining bar



Fig. 2 Gatepost Bracket

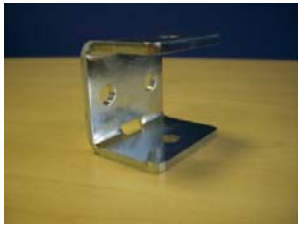


Fig. 3 Gate Bracket



Fig. 4 Hexagon Headed Securing Pins



Fig. 5 Stainless Steel Spacers



Fig. 6 Button Head Socket Cap Screws with Plain Washers



Fig. 7 Black Fitting Bar

DO NOT REMOVE CLAMP OR ZIP TIES FROM GATE CLOSER CYLINDER

Step 1

Fix gate post bracket to the gatepost using a temporary clamp and following the dimensions from the appropriate hinge layout on the previous page.

Step 2

Using one of the hexagon headed securing pins, fix one end of the fitting bar to the mounting bracket already attached to the gatepost. Fix the other mounting bracket to the fitting bar using the other hexagon headed securing pin, and then swing the bar and the bracket around to the gate, check the brackets are horizontally in-line with each other, and then fix to gate using a temporary clamp. Remove the fitting bar and open the gate to 90 degrees and make sure the distance between the centres of the gatepost bracket hole and gate bracket hole are 555 mm or more. If you are satisfied the gate-opening angle is sufficient, mark the fixing holes for the two mounting brackets on the gatepost and gate. Drill and tap the fixing holes in the gatepost and gate and fix the mounting brackets to the gatepost and gate. Alternatively, weld brackets to gatepost and gate.

Step 3

Grease and fit the stainless steel spacers to the gate closer cylinder. Open the gate until the holes on the mounting brackets align with the holes in the stainless steel spacers fitted to the gate closer cylinder. Then fit the gate closer cylinder complete with its retaining bar and spacers to the mounting brackets on the gatepost and gate using the hexagon headed stainless steel securing pins.

Remove the zip ties and open the gate further this will release the retaining bar and then remove the steel retaining bar from the gate closer cylinder. Release the gate and it will close automatically.

Step 4

Set the gate's mechanical stop to the correct position. To do this, open the gate to a position where the distance between the centres of the hexagon headed fixing pins are 555 mm or more. Set the gate's mechanical stop to restrict the opening at this point. Open the gate and allow the closer to close the gate a few times to check the function.

Step 5

Check all fixings are secure. Fit M6 socket button head screws into the underside of the hexagon headed stainless steel securing pins using a thread locking liquid. Finally, remove plastic cover from the gate closer cylinder.

Step 6

If the brackets have been welded, paint brackets and gate parts as necessary. Finally, coat the swivel joints, exposed parts of the stainless steel fixing pins and socket button screws with a layer of grease. The gate closer is now ready for use.

Step 7

Advise the person responsible for maintaining the gate closer of the maintenance requirements shown on next page. If you are the installer, pass on the retaining bar and maintenance instructions to the user.

Maintenance

Regular maintenance is required to ensure the maximum life of the gate closer and the safety of the users. The regularity of maintenance should reflect the frequency of use, environment and the likelihood of vandalism or misuse. Should you require more information about gate closer maintenance, please contact us using the contact details below.

The following checks and lubrication should be regularly carried out:

- 1) Check all fixings are secure
- 2) Check gate closer, brackets and swivel joints are not damaged
- 3) Coat swivel joints with lithium grease and periodically remove closer and coat fixing pins and spacers with lithium grease
- 4) Remove gate closer immediately if it malfunctions in any way or there is any damage noted
- 5) **Important! - Retaining bar must be kept for maintenance purposes**

Usage

Lock-tec Pedestrian Gate Closers are suitable for medium use gates. To ensure the maximum life of the closer, follow these points as closely as possible:

- 1) Encourage users to allow the gate closer to close the gate and not to push the gate closed
- 2) Should the gate have a high usage period, it will not damage the closer if the gate is temporarily held open by a drop bolt, hook or similar device

Disclaimer

Lock-tec (UK) Ltd will not accept any liability whatsoever for damage caused by incorrect fitting, misuse, or incorrect assessment of the application. In purchasing this product, the purchaser accepts all responsibility for the installation, operation and maintenance of the product.